



MAPE

STENCIL

CUTTING

MACHINE

LCL-6558

**New, cost-effective design:**

LCL-6558 is a dedicated laser-cutting machine for accurate stencil and "micro-machining" production.

It is highly flexible and easy-to-use, with a no-nonsense approach.

It has been designed to produce highly accurate SMT stencils at a reasonable price.

Mape LCL is designed using the most advanced Fiberlaser and optical systems, combined with flexible load/unload of framed and frameless stencil-sheets.

The design provides minimal maintenance cost, simple operation and easy trouble-shooting.

**Simple operation:**

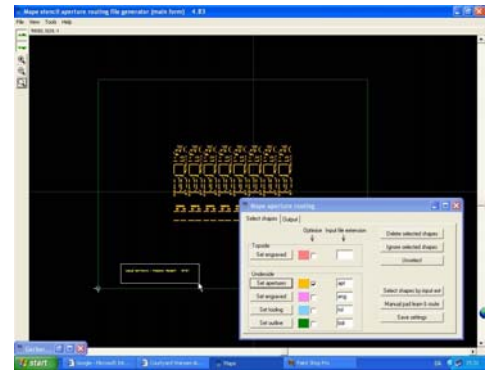
The machine is extremely user-friendly. By using only 4 steps, any operator will be able to produce quality stencils after a few hours of training. The steps are:

- Load a frame,
- "GerberGrabbing" the gerberfile,
- Load job,
- Press Start.

**Versatility in application:**

Mape LCL machine can be used for a large variety of applications due to it's fully controllable Z-axis movement and wide working area:

- Precision SMT stencils,
- Laser cutting of microparts,
- Engraving of text, fiducials, barcodes.
- Special applications, e.g. welding.



**Streamlined Data Conversion via Mape's "GerberGrab" Front End System:**

A powerful yet easy-to-use, PC based front end system with Mape's own software package for importing Gerber files and convert them to the laser machining format. User-friendliness, simple operation, excellent service back-up and the possibility to expand your production capacity whenever you need it, at a very *reasonable* cost.

